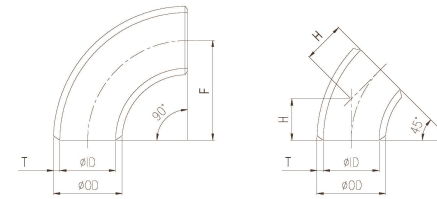




**WROUGHT
STAINLESS STEEL
BUTT WELD
PIPE FITTINGS**

90° Elbow (Long, Short)
45° Elbow (Long, Short)

Sch5s, Sch10s, Sch20s



(Unit : mm)

KS B1541/3, JIS B2312/3

Nominal Pipe Size (Unit : A)	outside Diameter O.D	Wall Thickness T			
		Sch 5s		Sch10s	
		I.D	T	I.D	T
15	21.7	18.40	1.65	17.5	2.1
20	27.2	23.90	1.65	23.0	2.1
25	34.0	30.70	1.65	28.4	2.8
32	42.7	39.40	1.65	37.1	2.8
40	48.6	45.30	1.65	43.0	2.8
50	60.5	57.20	1.65	54.9	2.8
65	76.3	72.10	2.10	70.3	3.0
80	89.1	84.90	2.10	83.1	3.0
90	101.6	97.40	2.10	95.6	3.0
100	114.3	110.10	2.10	108.3	3.0
125	139.8	134.20	2.80	133.0	3.4
150	165.2	159.60	2.80	158.4	3.4
200	216.3	210.70	2.80	208.3	4.0
250	267.4	260.60	3.40	259.4	4.0
300	318.5	310.50	4.00	309.5	4.5
350	355.6	-	-	-	-
400	406.4	-	-	-	-
450	457.2	-	-	-	-
500	508.0	-	-	-	-
550	558.8	-	-	-	-
600	609.6	-	-	-	-
750	762.0	-	-	-	-

Wall Thickness T		Center to Center			
Sch20s		Long		Short	
I.D	T	F (90°)	H (45°)	F (90°)	
16.7	2.5	38.1	15.8	-	
22.2	2.5	38.1	15.8	-	
28.0	3.0	38.1	15.8	25.4	
36.7	3.0	47.6	19.7	31.8	
42.6	3.0	57.2	23.7	38.1	
53.5	3.5	76.2	31.6	50.8	
69.3	3.5	95.3	39.5	63.5	
81.1	4.0	114.3	47.3	76.2	
93.6	4.0	133.4	55.3	88.9	
106.3	4.0	152.4	63.1	101.6	
129.8	5.0	190.5	78.9	127.0	
155.2	5.0	228.6	94.7	152.4	
203.3	6.5	304.8	126.3	203.2	
254.4	6.5	381.0	157.8	254.0	
305.5	6.5	457.2	189.4	304.8	
-	-	533.4	220.9	355.6	
-	-	609.6	252.5	406.4	
-	-	685.8	284.1	457.2	
-	-	762.0	315.6	508.0	
-	-	838.2	347.2	558.8	
-	-	914.4	378.7	609.6	
-	-	1143.0	473.4	762.0	

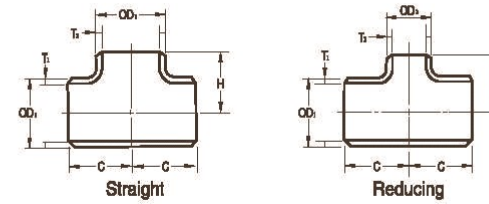
- For Bevel Details See Page 358
- For Dimensional Tolerances See Page 370

Tee

Sch5s, Sch10s, Sch20s

KS B1541/3, JIS B2312/3

Nominal Pipe Size (Unit : A)	Outside Diameter		Wall Thickness T	
	OD1	OD2	Sch 5s	
			T1	T2
15	21.7	21.7	1.65	1.65
20	27.2	27.2	1.65	1.65
25	34.0	34.0	1.65	1.65
32	42.7	42.7	1.65	1.65
32 x 32 x 25	42.7	34.0	1.65	1.65
40	48.6	48.6	1.65	1.65
40 x 40 x 32	48.6	42.7	1.65	1.65
40 x 40 x 25	48.6	34.0	1.65	1.65
50	60.5	60.5	1.65	1.65
50 x 50 x 40	60.5	48.6	1.65	1.65
50 x 50 x 32	60.5	42.7	1.65	1.65
65	76.3	76.3	2.10	2.10
65 x 65 x 50	76.3	60.5	2.10	1.65
65 x 65 x 40	76.3	48.6	2.10	1.65
80	89.1	89.1	2.10	2.10
80 x 80 x 65	89.1	76.3	2.10	2.10
80 x 80 x 50	89.1	60.5	2.10	1.65
90	101.6	101.6	2.10	2.10
90 x 90 x 80	101.6	89.1	2.10	2.10
90 x 90 x 65	101.6	76.3	2.10	2.10
100	114.3	114.3	2.10	2.10
100 x 100 x 90	114.3	101.6	2.10	2.10
100 x 100 x 80	114.3	89.1	2.10	2.10
100 x 100 x 65	114.3	76.3	2.10	2.10
125	139.8	139.8	2.80	2.80



(Unit : mm)

Wall Thickness T				Center to Center	
Sch 10s		Sch 20s		C	M
T1	T2	T1	T2		
2.1	2.1	2.5	2.5	25.4	25.4
2.1	2.1	2.5	2.5	28.6	28.6
2.8	2.8	3.0	3.0	38.1	38.1
2.8	2.8	3.0	3.0	47.6	47.6
2.8	2.8	3.0	3.0	47.6	47.6
2.8	2.8	3.0	3.0	57.2	57.2
2.8	2.8	3.0	3.0	57.2	57.2
2.8	2.8	3.5	3.5	63.5	63.5
2.8	2.8	3.5	3.0	63.5	60.3
2.8	2.8	3.5	3.0	63.5	57.2
3.0	3.0	3.5	3.5	76.2	76.2
3.0	2.8	3.5	3.5	76.2	69.9
3.0	2.8	3.5	3.0	76.2	66.7
3.0	3.0	4.0	4.0	85.7	85.7
3.0	3.0	4.0	3.5	85.7	82.6
3.0	2.8	4.0	3.5	85.7	76.2
3.0	3.0	4.0	4.0	95.3	95.3
3.0	3.0	4.0	4.0	95.3	92.1
3.0	3.0	4.0	3.5	95.3	88.9
3.0	3.0	4.0	4.0	104.8	104.8
3.0	3.0	4.0	4.0	104.8	101.6
3.0	3.0	4.0	4.0	104.8	98.4
3.0	3.0	4.0	3.5	104.8	95.3
3.4	3.4	5.0	5.0	123.8	123.8

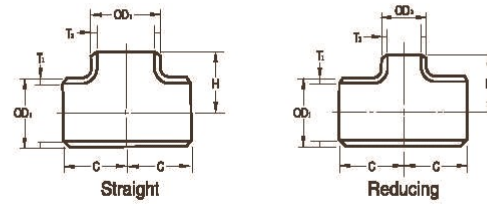
KS/JIS

Tee

Sch5s, Sch10s, Sch20s

KS B1541/3, JIS B2312/3

Nominal Pipe Size (Unit : A)	Outside Diameter		Wall Thickness T	
	OD1	OD2	Sch 5s	
			T1	T2
125 x 125 x 100	139.8	114.3	2.80	2.10
125 x 125 x 90	139.8	101.6	2.80	2.10
125 x 125 x 80	139.8	89.1	2.80	2.10
150	165.2	165.2	2.80	2.80
150 x 150 x 125	165.2	139.8	2.80	2.80
150 x 150 x 100	165.2	114.3	2.80	2.10
200	216.3	216.3	2.80	2.80
200 x 200 x 150	216.3	165.2	2.80	2.80
200 x 200 x 125	216.3	139.8	2.80	2.80
250	267.4	267.4	3.40	3.40
250 x 250 x 200	267.4	216.3	3.40	2.80
250 x 250 x 150	267.4	165.2	3.40	2.80
300	318.5	318.5	4.00	4.00
300 x 300 x 250	318.5	267.4	4.00	3.40
300 x 300 x 200	318.5	216.3	4.00	2.80
350	355.6	355.6	-	-
350 x 350 x 300	355.6	318.5	-	-
350 x 350 x 250	355.6	267.4	-	-
350 x 350 x 200	355.6	216.3	-	-
400	406.4	406.4	-	-
400 x 400 x 350	406.4	355.6	-	-
400 x 400 x 300	406.4	318.5	-	-
400 x 400 x 250	406.4	267.4	-	-
450	457.2	457.2	-	-
450 x 450 x 400	457.2	406.4	-	-



(Unit : mm)

Wall Thickness T				Center to Center	
Sch 10s		Sch 20s		C	M
T1	T2	T1	T2		
3.4	3.0	5.0	4.0	123.8	117.5
3.4	3.0	5.0	4.0	123.8	114.3
3.4	3.0	5.0	4.0	123.8	111.1
3.4	3.4	5.0	5.0	142.9	142.9
3.4	3.4	5.0	5.0	142.9	136.5
3.4	3.0	5.0	4.0	142.9	130.2
4.0	4.0	6.5	6.5	177.8	177.8
4.0	3.4	6.5	5.0	177.8	168.3
4.0	3.4	6.5	5.0	177.8	161.9
4.0	4.0	6.5	6.5	215.9	215.9
4.0	4.0	6.5	6.5	215.9	203.2
4.0	3.4	6.5	5.0	215.9	193.7
4.5	4.5	6.5	6.5	254.0	254.0
4.5	4.0	6.5	6.5	254.0	241.3
4.5	4.0	6.5	6.5	254.0	228.6
-	-	-	-	279.4	279.4
-	-	-	-	279.4	269.9
-	-	-	-	279.4	257.2
-	-	-	-	279.4	247.7
-	-	-	-	304.8	304.8
-	-	-	-	304.8	304.8
-	-	-	-	304.8	295.3
-	-	-	-	304.8	282.6
-	-	-	-	342.9	342.9
-	-	-	-	342.9	330.2

KS/JIS

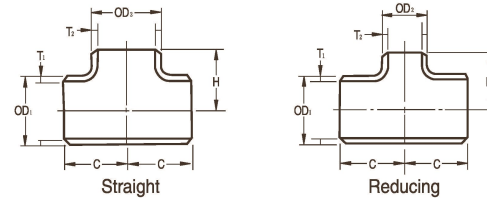
Tee

Sch5s, Sch10s, Sch20s

KS B1541/3, JIS B2312/3

Nominal Pipe Size (Unit : A)	Outside Diameter		Wall Thickness T	
	OD1	OD2	Sch 5s	
			T1	T2
450 x 450 x 350	457.2	355.6	-	-
450 x 450 x 300	457.2	318.5	-	-
500	508.0	508.0	-	-
500 x 500 x 450	508.0	457.2	-	-
500 x 500 x 400	508.0	406.4	-	-
500 x 500 x 350	508.0	355.6	-	-
550	558.8	558.8	-	-
550 x 550 x 500	558.8	508.0	-	-
550 x 550 x 450	558.8	457.2	-	-
550 x 550 x 400	558.8	406.4	-	-
600	609.6	609.6	-	-
600 x 600 x 550	609.6	558.8	-	-
600 x 600 x 500	609.6	508.0	-	-
600 x 600 x 450	609.6	457.2	-	-
750	762.0	762.0	-	-
750 x 750 x 600	762.0	609.6	-	-

- For Bevel Details See Page 358
- For Dimensional Tolerances See Page 370



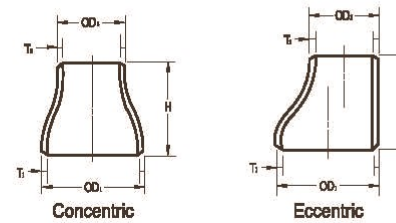
(Unit : mm)

Wall Thickness T				Center to Center	
Sch 10s		Sch 20s		C	M
T1	T2	T1	T2		
-	-	-	-	342.9	330.2
-	-	-	-	342.9	320.7
-	-	-	-	381.0	381.0
-	-	-	-	381.0	368.3
-	-	-	-	381.0	355.6
-	-	-	-	381.0	355.6
-	-	-	-	419.1	419.1
-	-	-	-	419.1	406.4
-	-	-	-	419.1	393.7
-	-	-	-	419.1	381.0
-	-	-	-	431.8	431.8
-	-	-	-	431.8	431.8
-	-	-	-	431.8	431.8
-	-	-	-	431.8	419.1
-	-	-	-	558.8	558.8
-	-	-	-	558.8	533.4

KS/JIS

Reducer

Sch5s, Sch10s, Sch20s



KS B1541/3, JIS B2312/3

Nominal Pipe Size (Unit : A)	Outside Diameter		Wall Thickness T	
	OD1	OD2	Sch 5s	
			T1	T2
25 x 20	34.0	27.2	1.65	1.65
25 x 15	34.0	21.7	1.65	1.65
32 x 25	42.7	34.0	1.65	1.65
32 x 20	42.7	27.2	1.65	1.65
40 x 32	48.6	42.7	1.65	1.65
40 x 25	48.6	34.0	1.65	1.65
40 x 20	48.6	27.2	1.65	1.65
50 x 40	60.5	48.6	1.65	1.65
50 x 32	60.5	42.7	1.65	1.65
50 x 25	60.5	34.0	1.65	1.65
65 x 50	76.3	60.5	2.10	1.65
65 x 40	76.3	48.6	2.10	1.65
65 x 32	76.3	42.7	2.10	1.65
80 x 65	89.1	76.3	2.10	2.10
80 x 50	89.1	60.5	2.10	1.65
80 x 40	89.1	48.6	2.10	1.65
90 x 80	101.6	89.1	2.10	2.10
90 x 65	101.6	76.3	2.10	2.10
90 x 50	101.6	60.5	2.10	1.65
100 x 90	114.3	101.6	2.10	2.10
100 x 80	114.3	89.1	2.10	2.10
100 x 65	114.3	76.3	2.10	2.10
100 x 50	114.3	60.5	2.10	1.65

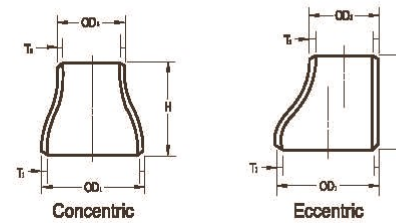
(Unit : mm)

Wall Thickness T				End to End H
Sch 10s		Sch 20s		
T1	T2	T1	T2	H
2.8	2.1	3.0	2.5	50.8
2.8	2.1	3.0	2.5	50.8
2.8	2.8	3.0	3.0	50.8
2.8	2.1	3.0	2.5	50.8
2.8	2.8	3.0	3.0	63.5
2.8	2.8	3.0	3.0	63.5
2.8	2.1	3.0	2.5	63.5
2.8	2.8	3.5	3.0	76.2
2.8	2.8	3.5	3.0	76.2
2.8	2.8	3.5	3.0	76.2
3.0	2.8	3.5	3.5	88.9
3.0	2.8	3.5	3.0	88.9
3.0	2.8	3.5	3.0	88.9
3.0	3.0	4.0	3.5	88.9
3.0	2.8	4.0	3.5	88.9
3.0	2.8	4.0	3.0	88.9
3.0	3.0	4.0	4.0	101.6
3.0	3.0	4.0	3.5	101.6
3.0	2.8	4.0	3.5	101.6
3.0	3.0	4.0	4.0	101.6
3.0	3.0	4.0	4.0	101.6
3.0	3.0	4.0	3.5	101.6
3.0	2.8	4.0	3.5	101.6

KS/JIS

Reducer

Sch5s, Sch10s, Sch20s



KS B1541/3, JIS B2312/3

Nominal Pipe Size (Unit : A)	Outside Diameter		Wall Thickness T	
	OD1	OD2	Sch 5s	
			T1	T2
125 x 100	139.8	114.3	2.80	2.10
125 x 90	139.8	101.6	2.80	2.10
125 x 80	139.8	89.1	2.80	2.10
125 x 65	139.8	76.3	2.80	2.10
150 x 125	165.2	139.8	2.80	2.80
150 x 100	165.2	114.3	2.80	2.10
150 x 90	165.2	101.6	2.80	2.10
150 x 80	165.2	89.1	2.80	2.10
200 x 150	216.3	165.2	2.80	2.80
200 x 125	216.3	139.8	2.80	2.80
200 x 100	216.3	114.3	2.80	2.10
250 x 200	267.4	216.3	3.40	2.80
250 x 150	267.4	165.2	3.40	2.80
300 x 250	318.5	267.4	4.00	3.40
300 x 200	318.5	216.3	4.00	2.80
300 x 150	318.5	165.2	4.00	2.80
350 x 300	355.6	318.5	4.00	4.00
350 x 250	355.6	267.4	4.00	3.40
350 x 200	355.6	216.3	4.00	2.80
400 x 350	406.4	355.6	4.50	4.00
400 x 300	406.4	318.5	4.50	4.00
400 x 250	406.4	267.4	4.50	3.40

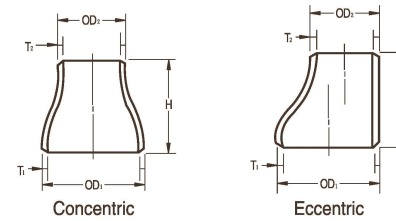
(Unit : mm)

Wall Thickness T				End to End
Sch 10s		Sch 20s		H
T1	T2	T1	T2	
3.4	3.0	5.0	4.0	127.0
3.4	3.0	5.0	4.0	127.0
3.4	3.0	5.0	4.0	127.0
3.4	3.0	5.0	3.5	127.0
3.4	3.4	5.0	5.0	139.7
3.4	3.0	5.0	4.0	139.7
3.4	3.0	5.0	4.0	139.7
3.4	3.0	5.0	4.0	139.7
4.0	3.4	6.5	5.0	152.4
4.0	3.4	6.5	5.0	152.4
4.0	3.0	6.5	4.0	152.4
4.0	4.0	6.5	6.5	177.8
4.0	3.4	6.5	5.0	177.8
4.5	4.0	6.5	6.5	203.2
4.5	4.0	6.5	6.5	203.2
4.5	3.4	6.5	5.0	203.2
4.8	4.5	8.0	6.5	330.2
4.8	4.0	8.0	6.5	330.2
4.8	4.0	8.0	6.5	330.2
4.8	4.8	8.0	8.0	355.6
4.8	4.5	8.0	6.5	355.6
4.8	4.0	8.0	6.5	355.6

KS/JIS

Reducer

Sch5s, Sch10s, Sch20s



Concentric

Eccentric

KS B1541/3, JIS B2312/3

Nominal Pipe Size (Unit : A)	Outside Diameter		Wall Thickness T	
	OD1	OD2	Sch 5s	
			T1	T2
450 x 400	457.2	406.4	4.50	4.50
450 x 350	457.2	355.6	4.50	4.00
450 x 300	457.2	318.5	5.00	4.00
500 x 300	508.0	457.2	5.00	4.00
550 x 500	558.8	508.0	5.00	5.00
550 x 450	558.8	457.2	5.00	4.50
550 x 400	558.8	406.4	5.00	4.50
600 x 400	609.6	406.4	5.50	4.50

- For Bevel Details See Page 358
- For Dimensional Tolerances See Page 370

(Unit : mm)

Wall Thickness T				End to End
Sch 10s		Sch 20s		H
T1	T2	T1	T2	
4.8	5.0	8.0	8.0	381.0
4.8	5.0	8.0	8.0	381.0
4.8	4.5	8.0	6.5	381.0
5.5	4.5	9.5	6.5	508.0
5.5	5.5	-	-	508.0
5.5	5.0	-	-	508.0
5.5	5.0	-	-	508.0
6.5	5.0	9.5	8.0	508.0

KS/JIS

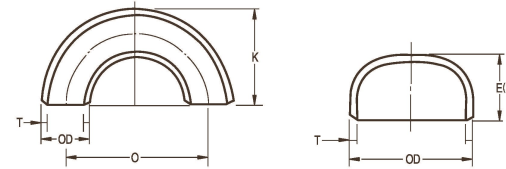
180° Elbow (Long, Short) Cap

Sch5s, Sch10s, Sch20s

KS B1541, JIS B2312

Nominal Pipe Size (Unit : A)	Outside Diameter O.D	Wall Thickness T		
		Sch 5s	Sch 10s	Sch 20s
15	21.7	1.65	2.1	2.5
20	27.2	1.65	2.1	2.5
25	34.0	1.65	2.8	3.0
32	42.7	1.65	2.8	3.0
40	48.6	1.65	2.8	3.0
50	60.5	1.65	2.8	3.5
65	76.3	2.10	3.0	3.5
80	89.1	2.10	3.0	4.0
90	101.6	2.10	3.0	4.0
100	114.3	2.10	3.0	4.0
125	139.8	2.80	3.4	5.0
150	165.2	2.80	3.4	5.0
200	216.3	2.80	4.0	6.5
250	267.4	3.40	4.0	6.5
300	318.5	4.00	4.5	6.5
350	355.6	4.00	5.0	8.0
400	406.4	4.50	5.0	8.0
450	457.2	4.50	5.0	8.0
500	508.0	5.00	5.5	9.5

- The Back-To-Face Dimension of Cap Shall Be E, If The Basic Wall Thickness is Not More Than The "Limited Wall Thickness" And E1 If It Exceeds The "Limited Wall Thickness"
- For Bevel Details See Page 358
- For Dimensional Tolerances See Page 370



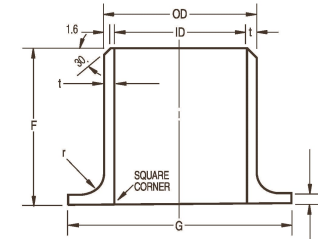
(Unit : mm)

CAP			180° Elbow			
E	E1	Limite Wall Thickness for E	Long		Short	
			O	K	O	K
25.4	-	-	76.2	49.0	-	-
25.4	-	-	76.2	51.7	-	-
38.1	-	-	76.2	55.1	50.8	42.4
38.1	-	-	95.2	69.0	63.6	53.2
38.1	-	-	114.4	81.5	76.2	62.4
38.1	44.5	5.5	152.4	106.5	101.6	81.1
38.1	50.8	7.0	190.6	133.5	127.0	101.7
50.8	63.5	7.6	228.6	158.9	152.4	120.8
63.5	76.2	8.1	266.8	184.2	177.8	139.7
63.5	76.2	8.6	304.8	209.6	203.2	158.8
76.2	88.9	9.5	381.0	260.4	254.0	196.9
88.9	101.6	11.0	457.2	311.2	304.8	235.0
101.6	127.0	12.7	609.6	413.0	406.4	311.4
127.0	152.4	12.7	762.0	514.7	508.0	387.7
152.4	177.8	12.7	914.4	616.5	609.6	464.1
165.1	190.5	12.7	1066.8	711.2	711.2	533.4
177.8	203.2	12.7	1219.2	812.8	812.8	609.6
203.2	228.6	12.7	1371.6	914.4	914.4	685.8
228.6	254.0	12.7	1524.0	1016.0	1016.0	762.0

KS/JIS

Lap Joint (Stub End)

Sch5s, Sch10s, Sch20s, Sch40s



JPI-75-15-70

Nominal Pipe Size (Unit : A)	Outside Diameter O.D	Sch 5s		Sch10s	
		I.D	t	I.D	t
15	21.7	18.4	1.65	17.5	2.1
20	27.2	23.9	1.65	23.0	2.1
25	34.0	30.7	1.65	28.4	2.8
32	42.7	39.4	1.65	37.1	2.8
40	48.6	45.3	1.65	43.0	2.8
50	60.5	57.2	1.65	54.9	2.8
65	76.3	72.1	2.10	70.3	3.0
80	89.1	84.9	2.10	83.1	3.0
90	101.6	97.4	2.10	95.6	3.0
100	114.3	110.1	2.10	108.3	3.0
125	139.8	134.2	2.80	133.0	3.4
150	165.2	159.6	2.80	158.4	3.4
200	216.3	210.7	2.80	208.3	4.0
250	267.4	260.6	3.40	259.4	4.0
300	318.5	310.5	4.00	309.5	4.5

• Minimum Lap Thickness "T" Shall not be less than Wall Thickness "t"

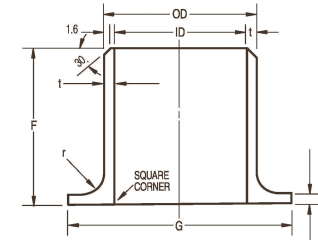
(Unit : mm)

Sch 20s		Sch 40s		F	G	r
I.D	t	I.D	t			
16.7	2.5	16.1	2.8	50	35	3.2
22.2	2.5	21.4	2.9	50	43	3.2
28.0	3.0	27.2	3.4	50	51	3.2
36.7	3.0	35.5	3.6	50	64	4.8
42.6	3.0	41.2	3.7	50	73	6.4
53.5	3.5	52.7	3.9	65	92	7.9
69.3	3.5	65.9	5.2	65	105	7.9
81.1	4.0	78.1	5.5	65	127	9.5
93.6	4.0	90.2	5.7	75	140	9.5
106.3	4.0	102.3	6.0	75	157	11.1
129.8	5.0	126.6	6.6	75	186	11.1
155.2	5.0	151.0	7.1	90	216	12.7
203.3	6.5	199.9	8.2	100	270	12.7
254.4	6.5	248.8	9.3	125	324	12.7
305.5	6.5	297.9	10.3	150	381	12.7

KS/JIS

Lap Joint (Stub End)

Sch5s, Sch10s, Sch20s, Sch40s



KS/JIS 10K

Nominal Pipe Size (Unit : A)	Outside Diameter O.D	Sch 5s		Sch 10s		Sch 20s	
		I.D	t	I.D	t	I.D	t
15	21.7	18.4	1.65	17.5	2.1	16.7	2.5
20	27.2	23.9	1.65	23.0	2.1	22.2	2.5
25	34.0	30.7	1.65	28.4	2.8	28.0	3.0
32	42.7	39.4	1.65	37.1	2.8	36.7	3.0
40	48.6	45.3	1.65	43.0	2.8	42.6	3.0
50	60.5	57.2	1.65	54.9	2.8	53.5	3.5
65	76.3	72.1	2.10	70.3	3.0	69.3	3.5
80	89.1	84.9	2.10	83.1	3.0	81.1	4.0
90	101.6	97.4	2.10	95.6	3.0	93.6	4.0
100	114.3	110.1	2.10	108.3	3.0	106.3	4.0
125	139.8	134.2	2.80	133.0	3.4	129.8	5.0
150	165.2	159.6	2.80	158.4	3.4	155.2	5.0
200	216.3	210.7	2.80	208.3	4.0	203.3	6.5
250	267.4	260.6	3.40	259.4	4.0	254.4	6.5
300	318.5	310.5	4.00	309.5	4.5	305.5	6.5

- Dimensions Conform to TK Standards.
- This specification used for JIS 10K Flanges.

(Unit : mm)

Sch 40s		F	G	r	Approx Weight			
I.D	t				Sch 5s	Sch 10s	Sch 20s	Sch 40s
16.1	2.8	50	35	3.2	-	0.059	0.070	0.078
21.4	2.9	50	43	3.2	-	0.073	0.086	0.099
27.2	3.4	50	51	3.2	-	0.172	0.184	0.207
35.5	3.6	50	64	4.8	-	0.217	0.231	0.275
41.2	3.7	50	73	8.4	-	0.242	0.258	0.316
52.7	3.9	65	92	7.9	-	0.308	0.383	0.424
65.9	5.2	65	105	7.9	-	0.430	0.499	0.731
78.1	5.5	65	127	9.5	-	0.484	0.640	0.870
90.2	5.7	75	140	9.5	-	0.536	0.710	1.000
102.3	6.0	75	157	11.1	-	0.614	0.814	1.210
126.6	6.6	75	186	11.1	-	0.879	1.280	1.680
151.0	7.1	90	216	12.7	-	1.070	1.570	2.210
199.9	8.2	100	270	12.7	-	1.940	3.120	3.920
248.8	9.3	125	324	12.7	-	2.530	4.080	5.800
297.9	10.3	150	381	12.7	-	3.250	4.670	7.340

KS/JIS